

LIVE & ONLINE

# MACHINERY

## *On Farm Dispersal*

APR

12

10:30am

On behalf of  
Gubbin Machinery Ltd

KIVELLS  
MACHINERY



MartEye™

Penhole Farm, Coads Green, Launceston, PL15 7LZ

DISPERSAL SALE OF TRACTORS, MACHINERY, IMPLEMENTS & EFFECTS

**KIVELLSMACHINERY.MARTEYE.IE**

01409 253253 | MACHINERY@KIVELLS.COM | WWW.KIVELLS.COM

# Foreword

This important dispersal sale follows the decision of Neil and Chris Gubbin to retire from farming after many years at Penhole and a successful cattle breeding, showing and farming career the two brothers have decided to pursue further interests and hence the reason for this fixture which is not to be missed.

The sale represents a fine opportunity to acquire a grand range of farming kit from this beef and arable farm. The tractors and machinery will be found to be in excellent condition and have all been well maintained, looked after and regularly serviced by not only local suppliers but also the brothers themselves.

This sale is an important fixture within our sales calendar and it is full of items of interest ranging from not only tractors and farm machinery but also a huge range of granite which has been accumulated on the farm over many years which will be of interest to collectors.

The sale starts at 10:30am and we look forward to seeing you on the day. Our sincere thanks go to Chris and Neil Gubbin for their kind instructions in this important dispersal sale.

## **Sale contacts:**

David Kivell      07899 960272

Lauren Dennis   01409 253253



# Notice to Purchasers

**1. Registration and Bidding ONLINE-** ONLINE BIDDING is via Marteye, intending bidders must download the MartEye App from your phone App store where you can register. Once you have downloaded the App you need to go on the Kivells Machinery Page and **Sign in** with your details and then click the **Join** button. You can also access MartEye through [kivellsmachinery.marteye.ie](http://kivellsmachinery.marteye.ie) where you will be directed straight to our page and you will be required to **Sign in** with your details and then click the **Join** button. Once you have done this process your application will come through to us for approval. **We strongly advise registering well ahead of the sale as 'late' registrants, on the morning of sale, run the risk of not being approved in time.**

**2. Registration and Live Bidding** All those attending the sale in person will be required to register in the Kivells Pay Office whereby you will obtain a Bidding Card. The Bidding Card will be used to bid on the sale items. No shouting will be necessary.

**3. Commission Bids** - Kivells encourage the use of the Bidding Form which can be downloaded from [www.kivells.com](http://www.kivells.com) and phone bids may be possible - please contact the Auctioneers prior to the sale day.

**4. Registration and Conditions of Sale** - Kivells reserve the right to request additional information to include Driving License/Passport together with a Business Card/Utility Bills/Proof of Address/Business Letter Heading and the right to request a deposit ahead of any purchase or during sale proceedings. Kivells also reserve the right to deregister Buyers. It is strongly recommended that Bidders and Buyers read Kivells Standard Terms and Conditions of Sale ahead of the sale. Once you have registered you are confirming that you have read, agree with and will abide by those Conditions and these Notice to Purchasers. In registering you warrant that the information is correct, up to date on the sale closure date and you are over the age of 18. All registrations are provisional and subject to the approval by Kivells.

**5. Lot Viewing** – Viewing is permitted on the designated dates and times only unless previously agreed with the auctioneers. When inspecting lots, we encourage you to maintain a safe social distance and wear a face mask whilst on the Saleground.

Viewing Date(s) and Times are: 10am-4pm Friday before sale day and from 8am morning of the sale day.

**6. Health & Safety** - Kivells do not accept any liability for any damage or injury to persons, vehicles, plant, machinery, equipment or any lot not arising out of their negligence. When lots are located on The Sellers premises or 3rd party storage facilities then the aforementioned are responsible for Health & Safety. Any person entering the Salegrounds does so at their own risk, must comply with the requirements of any Health and Safety notices and guidelines and be appropriately dressed. All persons entering the premises are hereby given notice that there are significant risks due to the range and display of equipment, vehicle movement and the nature of the premises. Caution should be exercised and children must be fully supervised at all times. Permission from the Auctioneers / Seller or storage facility manager is required ahead of starting powered equipment or machinery. Any incidents or accidents on the premises should be reported to Kivells/ Seller or storage facility manager immediately. Kivells reserve the right for themselves and their Sellers and 3rd party storage facilities to refuse admission to any person or vehicle into the Saleground without giving reason. The Auctioneers also reserve the right for themselves and the Sellers and 3rd party storage facilities to halt any removal in the event there are concerns over the Buyer's or their contractor's capability and methods. The right extends to requesting confirmation of insurance cover, method statements and other assurances to include returnable deposits.

# Notice to Purchasers

**7. Descriptions of Lots** - Kivells has limited access to lots prior to sale and therefore Buyers should satisfy themselves prior to making bids as to the condition of any Lot and should rely on their own judgement as to whether the Lot accords with its description. All Lots are sold with all faults and imperfections and errors of description. All statements are the Auctioneers or Sellers opinion and are not statements or representations of facts. You do not have to bid.

**8. Payment - Currency GBP** – Onsite Attendees - Day of Sale: Online Bidders - The auctioneers will either 1) contact you on day of sale for immediate payment or 2) will email an invoice on the first weekday following the close of the sale. With email payment is thereafter due no later than 24 hours from the time of forwarding the invoice. Payments will be due in full at the final bid price in respect of the lot sold plus all associated costs, Buyers premium and VAT. Payment will only be accepted from the successful purchaser or their duly appointed agent. Any payment is to be by a means approved by the Auctioneers and include the Buyers Commission and VAT. Our terms are strictly cash, Bank Transfer, Debit Card, NO Credit Cards are accepted. Our Bank Account details are: Sort Code 56-00-49 Account Number 32532822.

**9. Payment in Cash** - In order to comply with money laundering regulations The Auctioneers will not accept Cash payments above the maximum permitted at the time of sale. The maximum varies according to exchange rates and currently it is circa £7,000 - £9,000. Buyers are advised to check with the Auctioneers ahead of the sale.

**10. Commission/Buyers Premium** - All Lots will be subject to a Buyers Commission / Premium whether sold by auction, by private treaty or tender pre or post sale. VAT at the standard rate will be charged on all commissions. Buyers shall pay Commission to the Auctioneers at the following rates:

☐ **10% on any single lot up to and including £2000**

☐ **5% on any single lot over £2000**

☐ **Any single lot over £30,000 will be subject to a commission 'cap'**

## **Currency GBP**

**11. Risk** - All lots remain at the risk of the Buyer from the fall of the hammer/closure of bidding for each lot and it is strongly advised that the Buyer effects insurance immediately.

**12. Collection of Lots** - All lots must be removed from the Saleground by end of play sale day (unless other arrangements have been made with the seller or the auctioneers). When removing lots, please ensure you maintain a safe social distance and we encourage you to wear a face mask. Lots can only be removed once full payment has been made. The Buyer is responsible for the collection of their lots and any associated costs of transport. Assistance with loading by The Auctioneers, Seller or the storage facility is given without any liability to The Buyer or The Buyers removal contractor. Buyers are strongly advised to use their own suitably qualified and insured contractors.

**13. Value Added Tax** - Please be aware some lots may be subject to VAT and therefore VAT will be charged in accordance to the current rate and added to all accounts and is applicable to the Commission/Buyers Premium. VAT status will be clearly stated in the Lot description.



# Notice to Purchasers

**14. Export of Lots** - All goods purchased from Kivells auctions that are to be exported or removed from the United Kingdom will:

1. Be dealt with under the requirements set out of HM Customs and Excise publications:

a) VAT Notice 703 dated January 2021 – Goods exported from the UK from 1st January 2021.

2. Be Zero rated for VAT purposes subject to the following conditions being met.

a) The goods are removed from Great Britain within three months from the time of supply (the date of auction). b) Kivells are provided with valid written evidence that the Lots have been removed from Great Britain within three months of the auction closure date. Unless and until the above requirements are fulfilled Purchasers will be charged VAT at the Great Britain standard rate (currently 20%). This will only be refunded if all requirements within the regulations are met within the specified time limits.

The Purchaser or their agent will be responsible for removing the Lots from Great Britain and will act as the importer of record and will be responsible for payment of any VAT, duties, goods and services tax, or other sales or import taxes or duties arising on the exportation of the goods from Great Britain and the importation of the goods into any country.

Neither Kivells or the Seller are responsible for any VAT, duties, goods and services tax, or other sales or import taxes or duties arising on the exportation of the lots from Great Britain and the importation of the lots into any country by the Purchaser or their agent.

Kivells recommend exporters visit <https://www.gov.uk/check-customs-declaration>

**ANY PHYTOSANITARY CERTIFICATION AND DOCUMENTATION REQUIRED TO EXPORT LOTS FROM GREAT BRITAIN ARE STRICTLY THE RESPONSIBILITY OF THE PURCHASER.**



## ONLINE BIDDING AVAILABLE

Simply Download the **MartEye App** from your phone App Store & Register.  
Then press the **JOIN** button on the **Kivells Machinery Page**

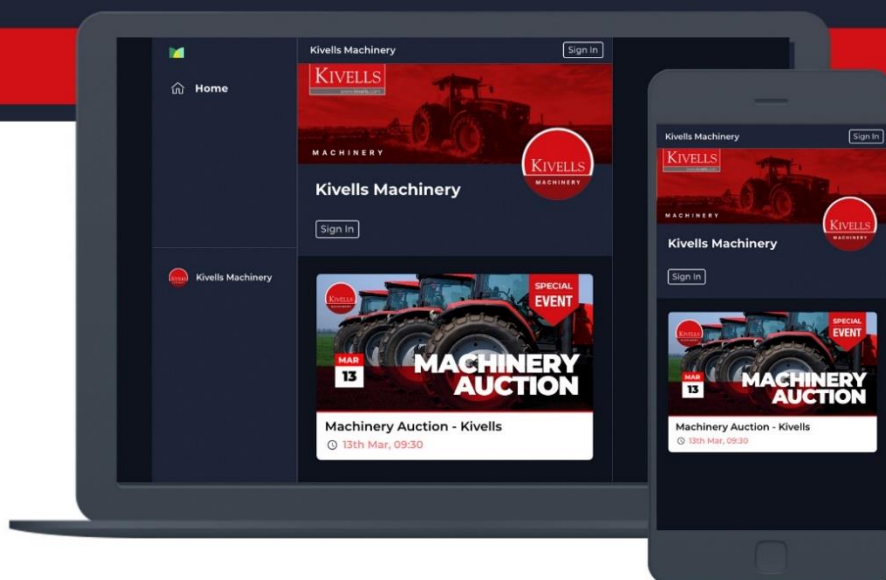
Your full details will be required for using online bidding and a trading reference **MUST** be provided prior to the sale day if you are not known to the Auctioneers. Applications made on the sale day for online bidding run the risk of not being approved. All buyers must ensure they have transport arranged prior to the Sale. All lots must be paid for prior to them leaving the Market.

Please Contact:  
**Holsworthy Market** on **01409 253275**



**ALSO AVAILABLE ON WEBSITE:**

**[kivellsmachinery.marteye.ie](http://kivellsmachinery.marteye.ie)**





# 1993 Massey Ferguson 34 combine

1,874 hours- L286 VRH





# 2020 Massey Ferguson 5711

With FL 3823 loader, 2,554 hours, 4WD- WK70 AEU





# 2014 Case 110 Maxxum

5,340 hours, 4WD - WA64 FGU



# 2012 Case 115 JXW

3,918 hours- WK62 DMU





# 1998 Case 100C MX

'S reg', 9,649 hours- S848 UGV



# 1988 Case 885 XL

'E reg', 5,597 hours- E271 SCV





# Deutz Fahr D5207 C scraper

4WD, 7,500 hours



# 2018 Claas rollant 340 round baler





# 2017 Kuhn GA 4121 GM rake

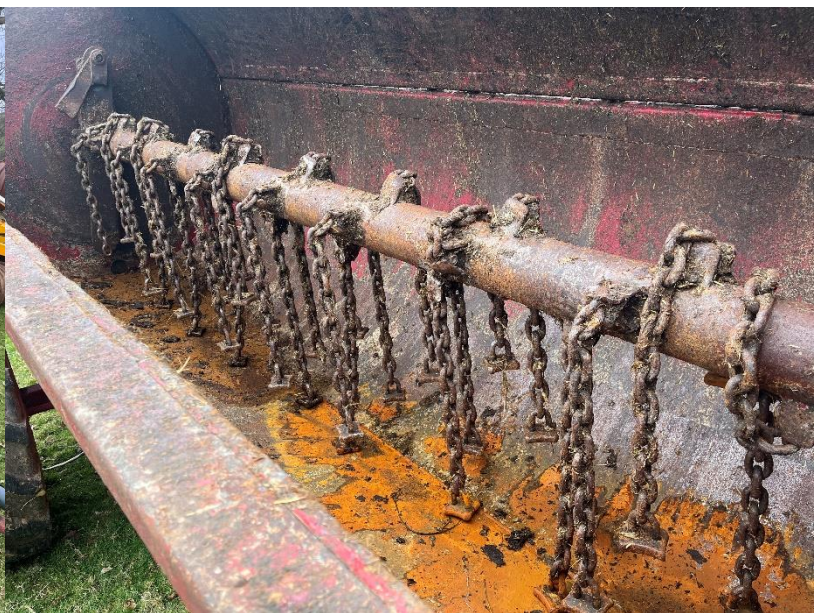


# 2021 Teagle Tomahawk 8100 straw





# 2019 Marshall dung spreader



# 2020 Massey Ferguson DM287 mower





# Twose hedge trimmer



# Folding Cambridge roller





# 2020 Kuhn 6 star tedder



# Kuhn fertiliser spreader





# Twose ballast roller



# Chain harrows





# Harrows



## Farmhand flat 8 bale grab





# Transport / link box



# Teagle topper





## 2023 JCB grab



## 2021 McHale bale spike





# Single phase roller mill



# Bateman foot trimming crush





## 2x calf creep feeders



## Bateman calf dehorning crate





# Various sheep and calf hurdles





# Feed barriers





# Qty of gates





# Qty of round feeders





# AW bale trailer



# Bale trailer





# Bale trailer

With wooden floor



# Grain trailer





# Grain trailer



# Grain trailer





# Marston tipping trailer



## 2x fuel stations

Deso V1340 DD



Harlequin 1400 FS (240V)





# Large qty of granite

Various length posts & shapes





# Various miscellaneous items





# Other entries include

- Silage wrap baler
- Tractor weights
- Various grain augers
- Grain blower
- 'A' frame
- Pressure washer
- Compressor
- Welder
- Grinder
- Motorway crash barriers
- 3 sets of cordless cattle clippers

## Notes



# Notes



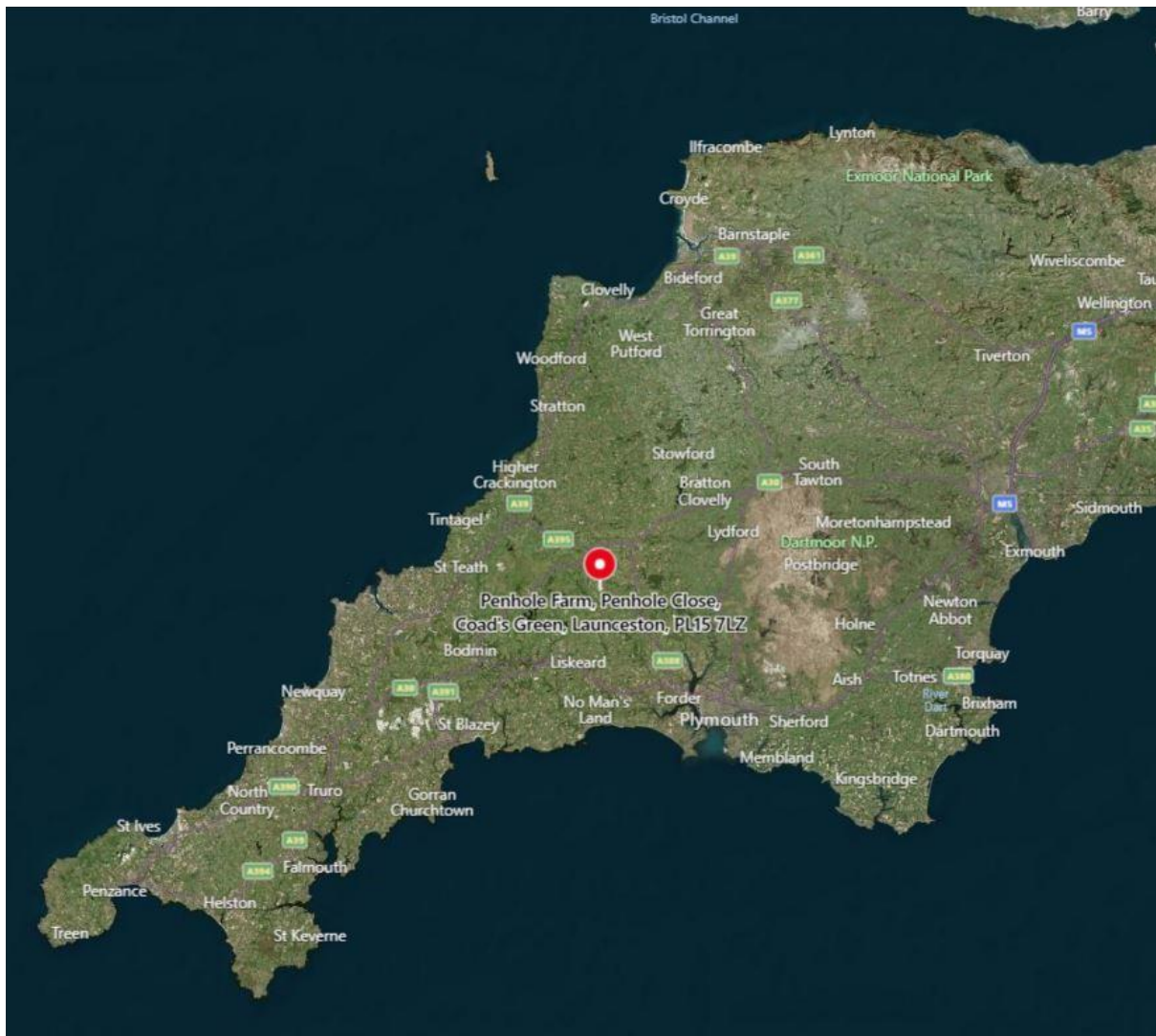
# Directions

**Penhole Farm, Coads Green, Launceston, PL15 7LZ**

**What 3 words: corrupted.goofy.fired**

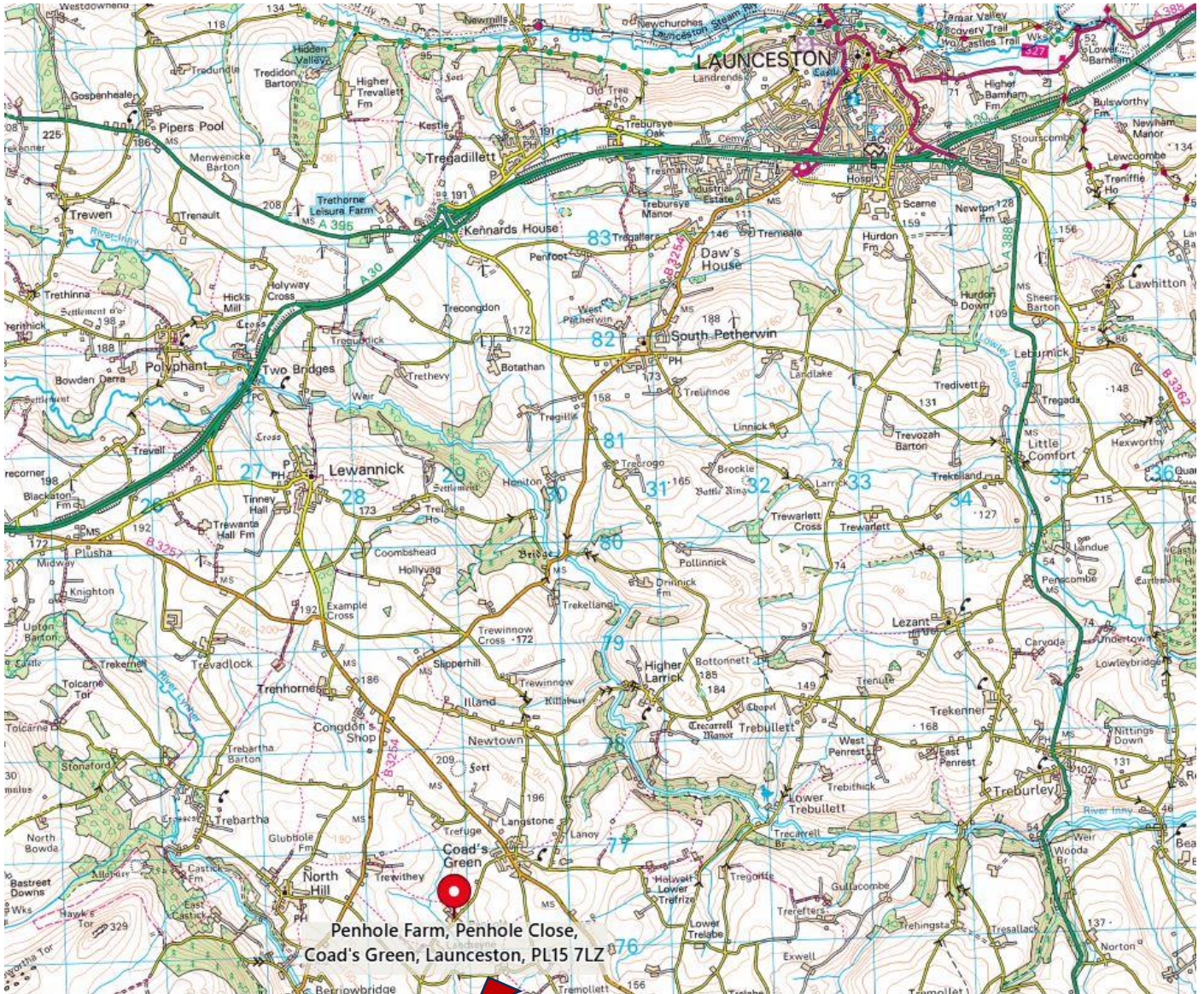
## From Launceston-

From Launceston, take the A30 towards Bodmin. Drive along the A30 for approximately 5 miles. Take the exit off the A30, signposted Lewannick. Follow this road for 0.4 miles before approaching a 'T' junction, turn right. Follow this road for 0.6 miles before approaching the B3257, turn left. Follow the B3257 for approximately 3.2 miles until you approach Coads Green, then take your first right. Follow this road for 0.7 miles and the sale will be on your left.





# Directions



Penhole Farm, Penhole Close,  
Coad's Green, Launceston, PL15 7LZ

Penhole Farm  
Coads Green  
Launceston  
PL15 7LZ



# Tradition Meets Technology

Our team of Machinery Auctioneers & Coordinators are at hand to sell your farm machinery whether it be on site, online or at one of our many collective auctions conducted throughout the South West and beyond.



## Kivells Machinery & Equipment Sales Online | On Site | On Market Premises

- 'Our expertise centres around the agricultural sector and as our clients have diversified so have we.'
- We sell a huge range of machinery and equipment both into and out of the sector.
- Our online service offering is market leading and the feedback we have received both from our vendors and buyers bears that out. We are proud of our reputation and we are confident the choice of MartEye as Kivells online service partner will add to that.
- Our policy is to offer the best online capability combined with tried and tested traditional methods. We recognise the role auctions play in the agricultural community enabling people to gather and meet and the wellbeing benefits that brings. It is all about achieving the right balance in a safe environment and at the same time maximise the realisation for our vendors and ease of use for our buyers. We believe Kivells combination of market leading sales technology and respect for tradition does just that.'

Thinking of Selling? Feel free to contact me or any of our team for a confidential discussion. It is never too early to plan and prepare'.

David Kivell  
Head of Machinery & Heritage Department

[www.kivells.com](http://www.kivells.com) | [machinery@kivells.com](mailto:machinery@kivells.com)

Holsworthy Livestock Market,  
New Market Road, Holsworthy, Devon EX22 7FA  
01409 253253

Exeter Livestock Centre,  
Matford Park Road, Exeter, Devon EX2 8FD  
01392 251261

